

Refrigeration Equipment 1-Hinged Glass Door Full Height Merchandise Refrigerator 25" Long

ITEM #

MODEL #

NAME #

SIS #

AIA #



738247 (KCHGM12R)

1-Hinged Glass Door Full
Height Merchandise
Refrigerator 25" Long

Short Form Specification

Item No.

1-glass door refrigerator with exterior back panel, bottom panel, and top panel in galvanized steel, exterior side panels in painted steel; interior back, side, and top panels in painted aluminum, and internal bottom panel in 304 stainless steel. Durable and easy to clean for daily commercial use. Control with cabinet temperature display. Self-closing door feature lock and key. Electronic control. R290 gas in refrigeration circuit. ETL Safety and Sanitation certified. 3/5 Years warranty.

Main Features

- External temperature display.
- Removable gasket for easy cleaning operations.
- Fin & Tube Condenser improves performance in high temperature environments.
- Automatic Defrost Cooling System provides worry-free performance.
- Heavy duty Vinyl coated steel shelves.
- Cabinet completely insulated with high density polyurethane for low environmental impact.

Construction

- Lockable door.
- Electronic control to select temperatures.
- Pre-wired heavy duty power cord.
- Heavy duty door hinges.
- Magnetic gasket removable without tools for easy cleaning.

Sustainability

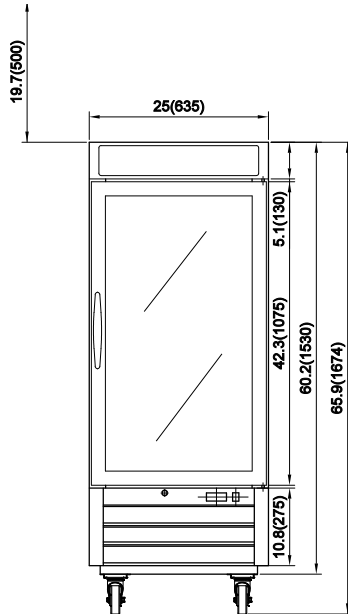
- CFC and HCFC free, highly ecological refrigerant type: R290 (ecological gas in foam: cyclopentane). Hydrocarbon refrigerant gas R290 for the lowest environmental impact (GWP=3), to reduce greenhouse and ozone depletion effects.
- Hydrocarbon refrigerant gas R290 for the lowest environmental impact (GWP=3) - CFC and HCFC free.
- High efficiency components to minimize the energy consumption still guaranteeing the highest performances.
- Interior LED light to save energy and for best internal visibility.

Optional Accessories

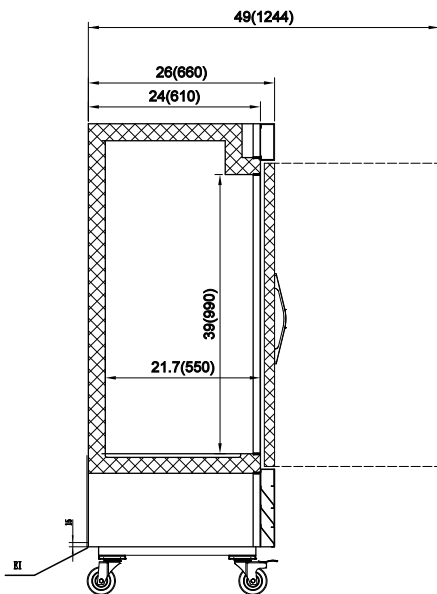
- Shelf clips (4-pack) PNC 880611 ☐
- Shelf for 12" Merchandise (Glass Door) PNC 880619 ☐

APPROVAL:

Front

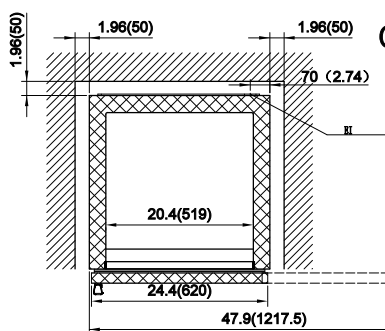


Side



EI = Electrical connection

Top



Electric

| | |
|------------------------|------------------|
| Supply voltage: | 115 V/1 ph/60 Hz |
| Electrical power, max: | 0.31 kW |
| Plug type: | USA NEMA 5-15P |

Capacity:

| | |
|--------------------------------------|-------------|
| Number and type of grids (included): | 3 - 458x503 |
| Gross capacity: | 12 cu.feet |

Key Information:

| | |
|-------------------------------|----------------------------|
| Warranty: | 3 / 5 years |
| Door hinges: | Right Side |
| External dimensions, Width: | 25 " (635 mm) |
| External dimensions, Depth: | 26 " (660 mm) |
| External dimensions, Height: | 65 15/16" (1674 mm) |
| Number and type of doors: | 1 Glass |
| Internal Dimensions (depth): | 21 11/16" / (551.18 mm) |
| Internal Dimensions (height): | 39 " / (990.6 mm) |
| Internal Dimensions (width): | 20 3/8" / (518.16 mm) |
| Shipping height: | 68 11/16" (1745 mm) |
| Shipping weight: | 247 lbs (112 kg) |
| Shipping volume: | 30.57 ft³ (0.87 m³) |
| Type of external material: | Black Prepainted Steel |
| Type of internal material: | White Prepainted Aluminium |
| Approvals | ETL C&US;ETL SANITATION |

Refrigeration Data

| | |
|-----------------------------|--------------|
| Condenser type: | Fin & tube |
| Operating temperature min.: | 32 °F |
| Compressor power: | 1/5 hp |
| Operating temperature max.: | 41 °F |
| Defrost type: | Auto Defrost |

Sustainability

| | |
|----------------------|--------|
| Current consumption: | 3 Amps |
| Refrigerant type: | R290 |
| GWP Index: | 3 |
| Refrigerant weight: | 85 g |